



St Saviour

Apartment 10



Revision H
22-08-17

The information contained in this brochure is for guidance only. Castletree Homes operate a policy of continuous product development and features may therefore vary from time to time. This information does not constitute a contract or warranty. All measurements and specifications are given as a guide only and may be subject to change without notice. All images are representative only, and do not necessarily reflect the development in question.

Highstead Farm St Saviour

Apartment 10

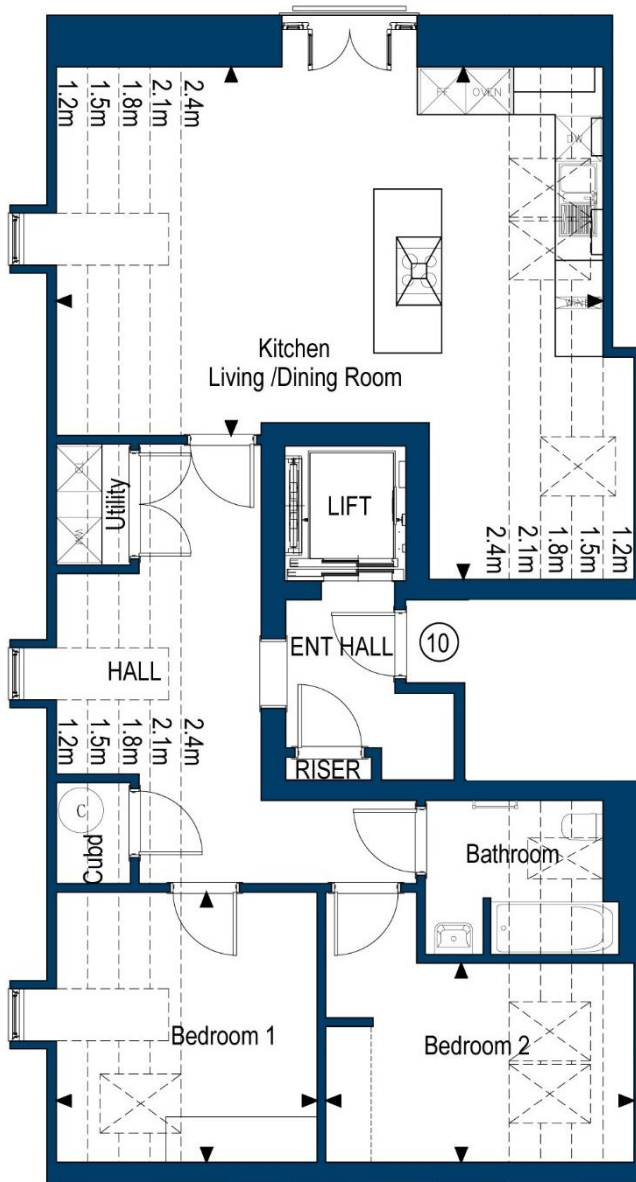


Site Layout

Apartment 10

Internal Area
88.0sqm (947sqft)

Note: Total area of property is the useable space measured to the 1.5m height line on a sloping ceiling. Rooms areas are the total floor area measured wall to wall.



Kitchen/Living /Dining Room

41.6sqm (447.78sqft)
7.23m x 4.88m (23'9" x 16'0")

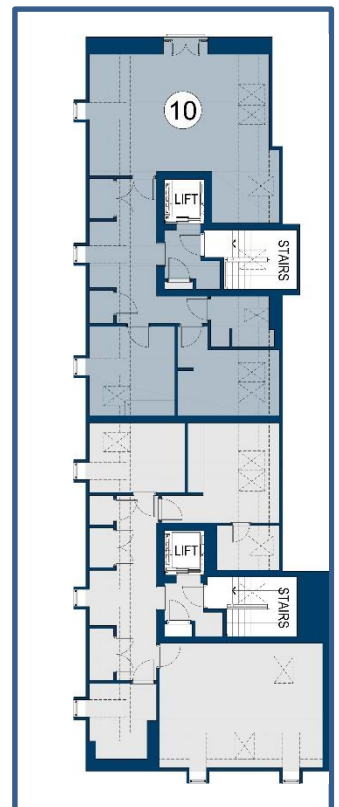
Bedroom 1

12.6sqm (135.60sqft)
3.58m x 3.45m (11'9" x 11'4")

Bedroom 2

11.9sqm (128.00sqft)
4.08m x 2.64m (13'5" x 8'8")

SECOND FLOOR KEY PLAN



Apartments

KITCHEN

- Luxury fitted high specification Omega kitchen from the Mackintosh range with feature under pelmet lighting.
 - Granite or Silestone worktop with 100mm upstand.
 - 1½ bowl under mounted stainless-steel sink with pillar chrome mixer tap.
 - A full range of integrated appliances including stainless-steel double oven, microwave/oven, fridge/freezer, dishwasher, compact wine fridge.
 - Induction hob and extractor hood.
- (Appliances subject to detailed kitchen design)*

UTILITY CUPBOARD

- Waste and water provided for washing machine / tumble dryer space.
- (No appliances are provided)*

BATHROOM / EN-SUITES

- White sanitaryware with chrome fittings.
- Contemporary fitted vanity furniture with storage under sink and large recessed mirror.
- Thermostatic controlled mixers to bath and adjustable rail for shower head.
- Close coupled WC with soft close seats and dual flush.
- Bath / shower screen, (if no shower in bathroom).
- En-suite, large walk in shower and thermostatic controlled mixer and fixed head.
- Illuminated feature recess with granite or Silestone cill.
- Ceramic floor and wall tiles with feature tile wall

HEATING AND WATER

- Electric under floor heating to all habitable rooms (low-tariff E20) off individual room thermostats.
- Electric thermostatically controlled towel chrome radiators to all bathrooms / en-suites.
- Electric (low-tariff E20) to hot water cylinders with secondary immersion heater. Mains pressure water.
- 1 external water tap to rear patio/garden (Apartment 1).

ELECTRICAL

- Satin stainless steel sockets with white insets throughout (white sockets in cupboards).
- Central common satellite dish, each apartment wired for Satellite (Sky+), TV & telephone points to living room, kitchen, all bedrooms and study. (Note satellite apartment control box not included)
- Cat 5 data cabling to all TV points to central cupboard.
- Satin stainless steel shaver sockets to bathrooms and en-suites.
- Individual flush ceiling fans to bathrooms, en-suites and cloakrooms.
- Mains-operated smoke alarms.

- Satin stainless steel LED downlights to all rooms.
- Cupboards to have LED wall light on movement sensor
- Recessed LED strip lighting in bathroom / en-suites.
- External RCD socket and feature LED lantern to patio (Apartment 1).

FINISHES

- Windows and external doors pre-factory finished.
- Internal walls generally in matt emulsion except bathrooms and cloakroom.
- Bathrooms and cloakroom walls in white vinyl silk.
- Plain ceilings finished in white matt emulsion.
- External walls (if not granite) painted in high quality external paint with feature bands and ashlar render defined in an alternative colour.
- Internal woodwork painted in white satin finish.

WINDOWS, DOORS & WOODWORK

- Softwood double glazed windows, doors and frames with softwood cills, pre-finished internally/externally.
- Softwood entrance doors off common areas.
- Softwood external entrance doors.
- Solid oak internal doors, polished finish, with satin stainless steel door furniture. Double doors to be glazed.
- Stained and polished oak carpet thresholds between habitable rooms.
- Fitted wardrobes to master bedroom only.
- Velux windows to selected rooms.

ENTRANCE LOBBY / COMMON AREAS

- Lobbies and staircase to be carpeted.
- Satin stainless steel video intercom entry system to common area entrance doors with handset to each apartment lobby. (Doorbell and internal hallway sounder to ground floor apartments)
- Carpeted lift with stainless steel finish
- Recessed ceiling LED lights on dawn until dusk control and PIR operation.
- Polished oak newels and spindles to staircase.
- Polished oak architraves.
- Oak finished joinery to letterboxes / shelving / parcel cupboard.

BYCYCLE AND BIN STORES

- Locked, communal bin store and bicycle store in separate building.
- LED lighting connected to PIR.

EXTERNAL

- Shared communal garden space, grass seeded with selected tree/shrub planting. (Private garden to Apartment 1).
- Block paving to private car parking bays.
- Apartments 1,2,3 & 4 to have exclusive use of communal spaces directly adjacent to their ground floor apartments.

The information contained in this brochure is for guidance only. Castletree Homes operate a policy of continuous product development and features may therefore vary from time to time. This information does not constitute a contract or warranty. All measurements and specifications are given as a guide only and may be subject to change without notice. All images are representative only, and do not necessarily reflect the development in question.