

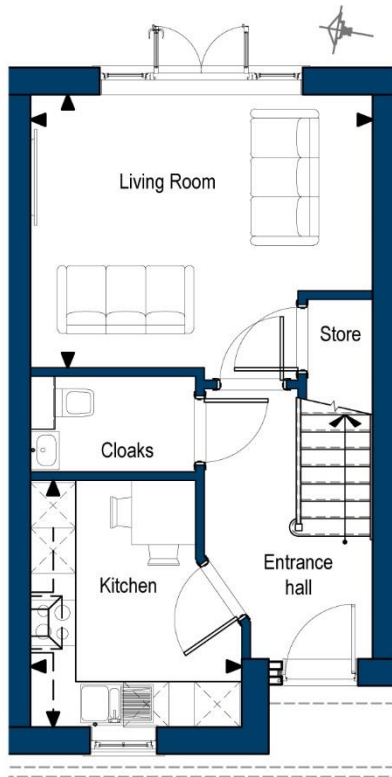


House 14 - £515,000



The information contained in this brochure is for guidance only. Castletree Homes operate a policy of continuous product development and features may therefore vary from time to time. This information does not constitute a contract or warranty. All measurements and specifications are given as a guide only and may be subject to change without notice. All images are representative only, and do not necessarily reflect the development in question.





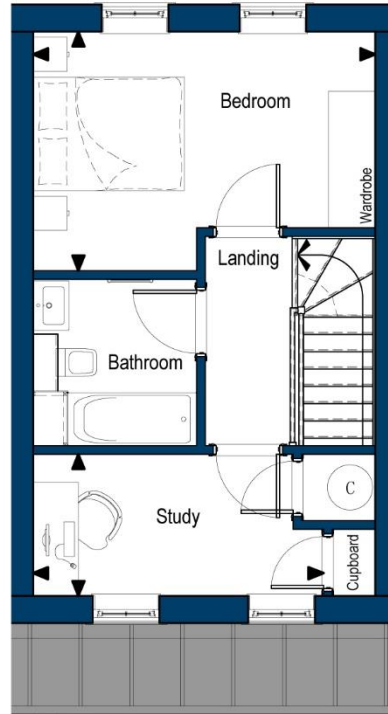
GROUND FLOOR

Living Room

4.52m x 3.60m (14'10" x 11'10")

Kitchen

3.26m x 2.80m (10'8" x 9'2")



FIRST FLOOR

Bedroom

4.52m x 3.16m (14'10" x 10'5")

Study

3.83m x 1.87m (12'7" x 6'1")

Houses 12 to 15

House Specification

KITCHEN

- Luxury fitted high specification Omega kitchen from the Mackintosh range with feature under pelmet lighting.
- Silestone worktop with 100mm upstand.
- 1½ bowl under mounted stainless-steel sink with pillar chrome mixer tap.
- A full range of integrated appliances including stainless-steel single oven, microwave/, fridge/freezer, slim line dishwasher, Induction hob and extractor hood.
- Integrated Washing / tumble dryer
- Ceramic floor tiles.

CLOAKROOM

- White sanitaryware with chrome fittings.
- Contemporary fitted vanity furniture with storage under sink and large mirror above.
- Ceramic floor tiles with feature tile wall.

HOUSE BATHROOM / EN-SUITES

- White sanitaryware with chrome fittings.
- Contemporary fitted vanity furniture with storage under sink and large mirror above.
- Thermostatic controlled mixers to bath and adjustable rail for shower head.
- Close coupled WC with soft close seats and dual flush.
- Bath / shower screen,(if no shower in bathroom).
- En-suite, large walk in shower and thermostatic controlled mixer and fixed head.
- Illuminated feature recess with Silestone cill.
- Master en-suite or master bathroom to have illuminated mirror cabinet with built in shave socket.
- Ceramic floor and part wall tiles with feature tile wall

HEATING AND WATER

- Electric under floor heating to all habitable rooms (low-tariff E20) off individual room thermostats.
- Electric thermostatically controlled towel chrome radiators to all bathrooms / en-suites.
- Electric (low-tariff E20) to hot water cylinders with secondary immersion heater. Mains pressure water.
- 1 external water tap to rear patio/garden.

ELECTRICAL

- Satin stainless steel sockets with white insets throughout (white sockets in cupboards).
- Wiring for Satellite (Sky+), TV & telephone points to living room, all bedrooms and study
- Cat 5 data cabling to all TV points to central cupboard.
- Satin stainless steel shaver sockets to bathrooms and en-suites.
- Individual ceiling fans to bathrooms, en-suites , cloakrooms, and utility.
- Mains-operated smoke alarms.
- External RCD socket to patio
- Front door bell and chime in hallway.
- Pendant light fitting with LED bulbs to living room, all bedrooms and study.
- white LED downlights to bathrooms, cloaks, kitchen - Family, utility, hallway and landings.
- Cupboards to have LED wall light on movement sensor
- Recessed LED strip lighting in bathroom / en-suites.
- Rear GF terrace LED wall mounted coach lantern.
- Front door LED wall mounted coach lantern on PIR /photo cell operation.

FINISHES

- Windows and external doors pre-factory finished.
- Internal walls generally in matt emulsion except bathrooms and cloakroom.
- Bathrooms and cloakroom walls if not tiled in white vinyl silk.
- Plain ceilings finished in white matt emulsion.
- External walls painted in high quality external paint with feature bands and ashlar render defined in an alternative colour.
- Internal woodwork painted in white satin finish.

WINDOWS, DOORS & WOODWORK

- Softwood double glazed windows, doors and frames with softwood Cills, pre-finished internally/externally.
- Solid front doors with satin stainless steel door furniture.
- Solid white painted internal doors, with satin stainless steel door furniture.
- Staircase: New softwood and MDF staircase , newel post, string and balustrade spindles painted. Stained and polished oak handrail.
- Stained and polished oak carpet thresholds between habitable rooms.
- Fitted sliding wardrobes to master bedroom only.

The information contained in this brochure is for guidance only. Castletree Homes operate a policy of continuous product development and features may therefore vary from time to time. This information does not constitute a contract or warranty. All measurements and specifications are given as a guide only and may be subject to change without notice. All images are representative only, and do not necessarily reflect the development in question.

Houses 12 to 15

External Area

GARDEN SHED

- Timber soft wood shed

EXTERNAL

- Grass seeded rear garden with selected tree planting.
- Paved patio, and garden path.
- Various fence types to enclose gardens.
- Plastic Wheelie Bin store.
- Block paving to private car parking bays.
- Electric car charging point per property

COMMON EXTERNAL AREAS

- Central common bin enclosure with Landlords water and electric supply.
 - Grass seeded or selected tree and shrub planting to Landscaped common areas
 - Common wild meadow planting to open space.
 - Block paved common shared roadway
 - Block paved visitor parking
 - Various fence types to enclose boundaries and landscaping.
 - Shared LED street lighting off landlords meter
-
- NB; there will be management company and charge to look after the common external areas, please request details.

The information contained in this brochure is for guidance only. Castletree Homes operate a policy of continuous product development and features may therefore vary from time to time. This information does not constitute a contract or warranty. All measurements and specifications are given as a guide only and may be subject to change without notice. All images are representative only, and do not necessarily reflect the development in question.