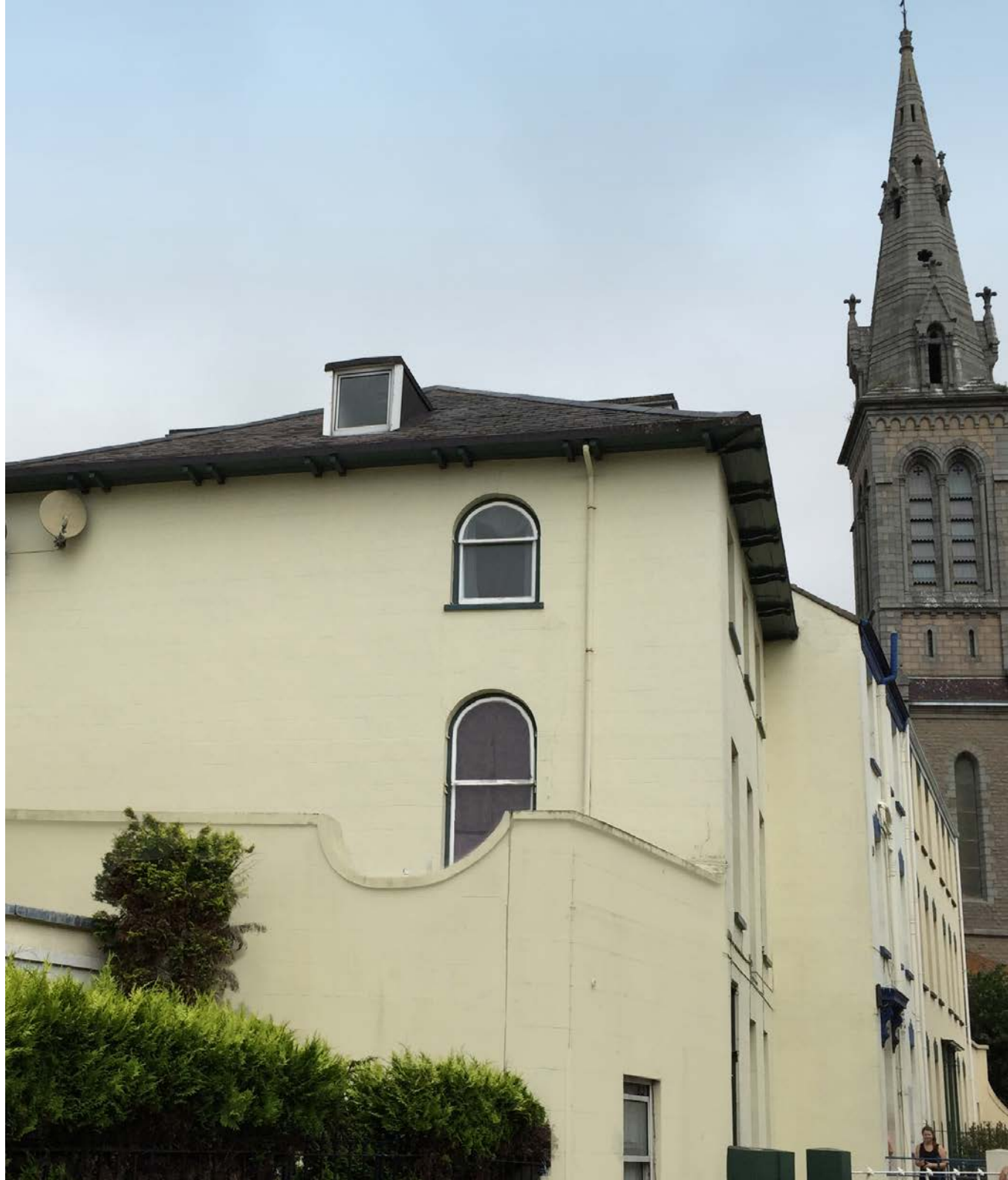




T: 01534 855513    E: [sales@castletreehomes.je](mailto:sales@castletreehomes.je)



# ELEVEN

St Helier

From £215,00

1 & 2 bedroom cottage and apartments.

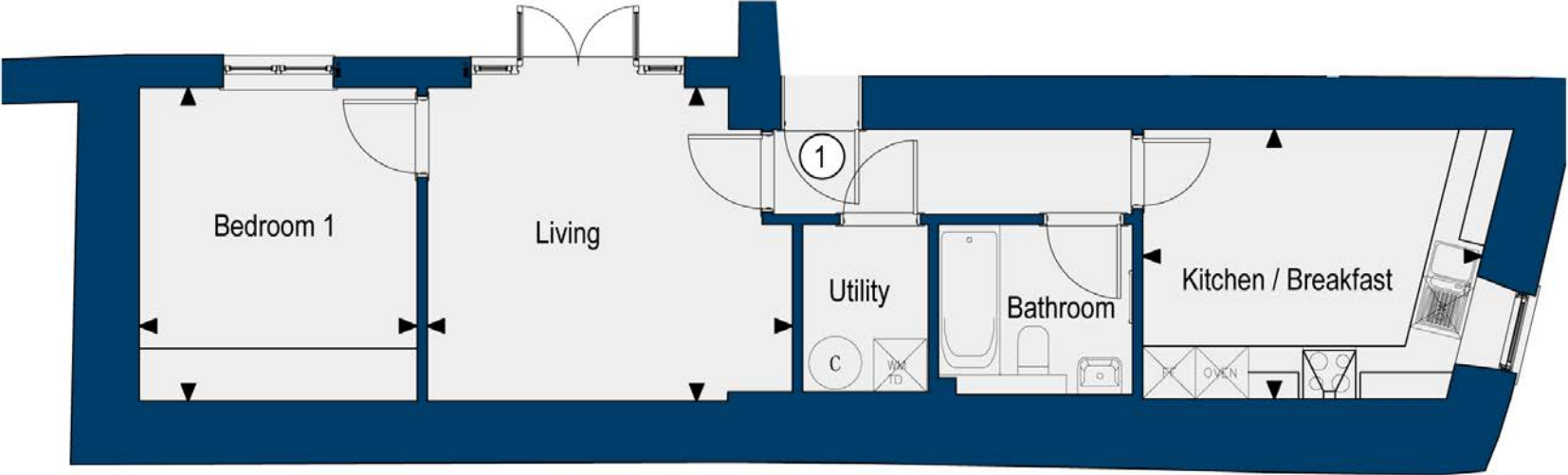
Eleven is a development of spacious apartments and a cottage, in the centre of St Helier, yet with their own parking.

The development at Val Plaisant consists of a two bedroom cottage and further four, one and two bedroom apartments, each with their own parking space. The properties have a fantastic location in the heart of St Helier, just a few minutes walk from the town centre and main shopping streets.

Apartment 1 Site Plan



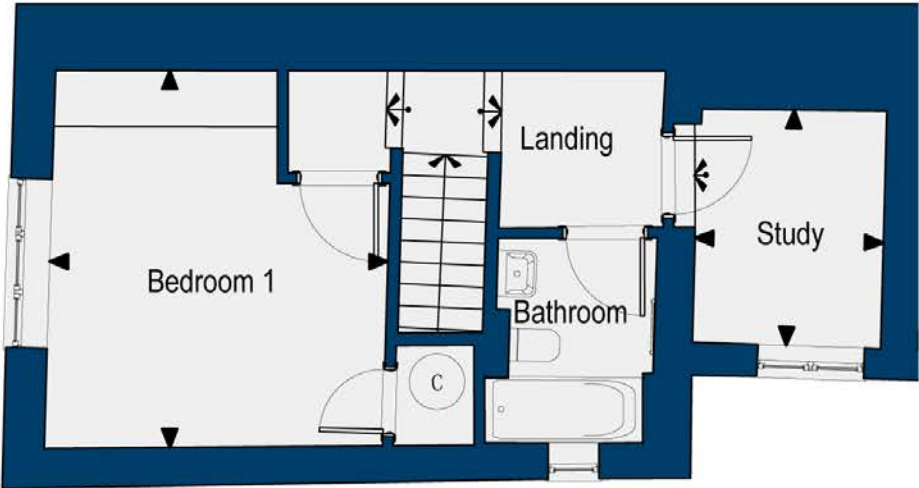
Apartment 1 Floor Plan



House 2 Site Plan

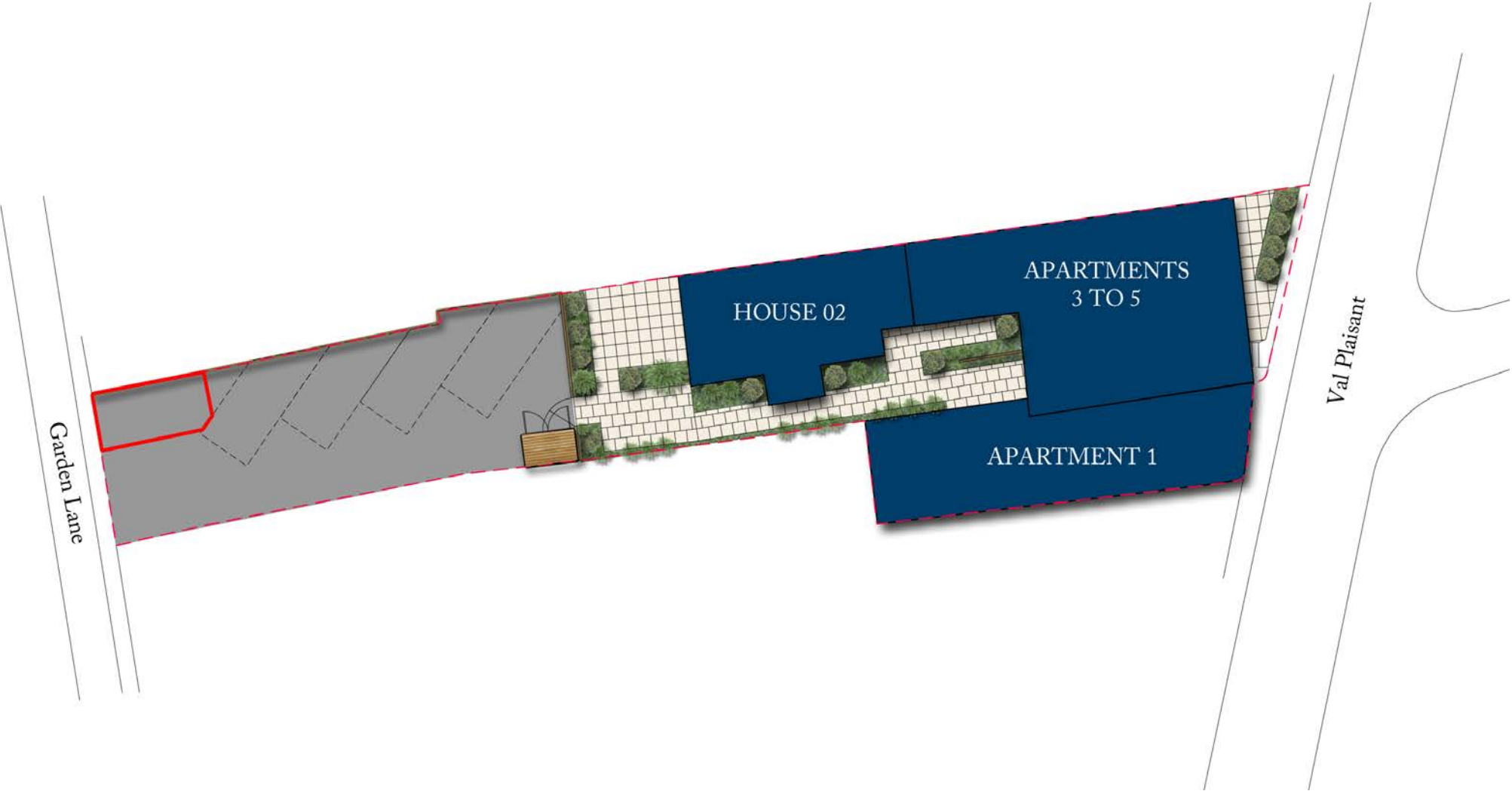


House 2 Plan



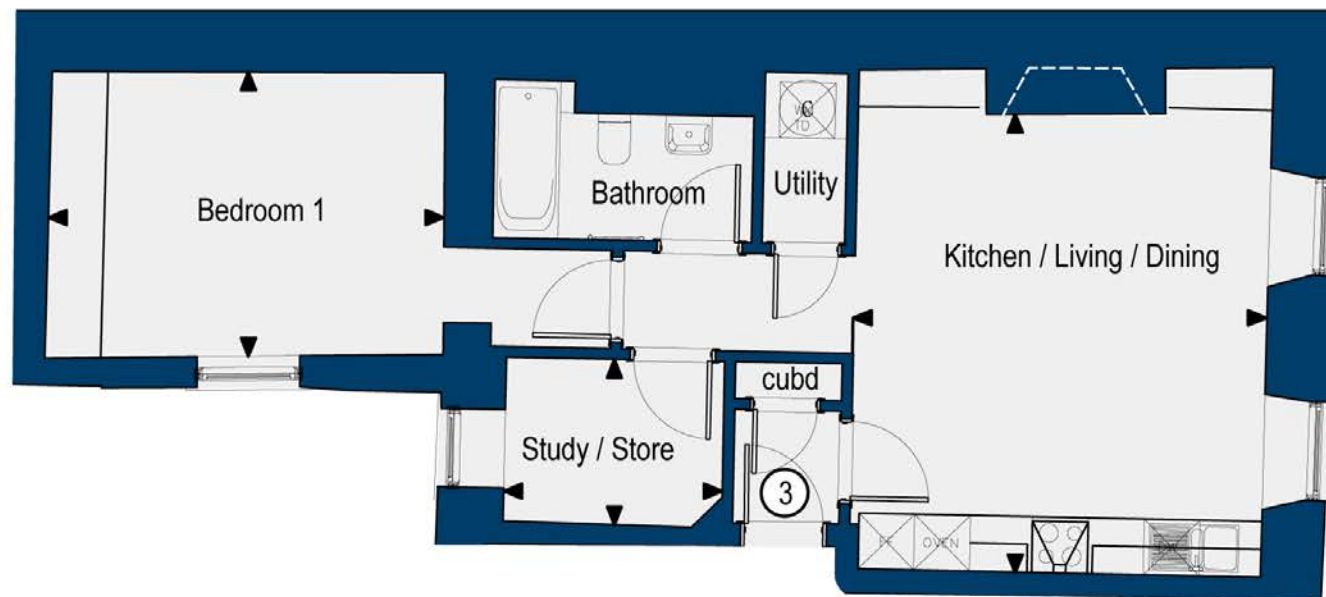


Apartment 3 Site Plan

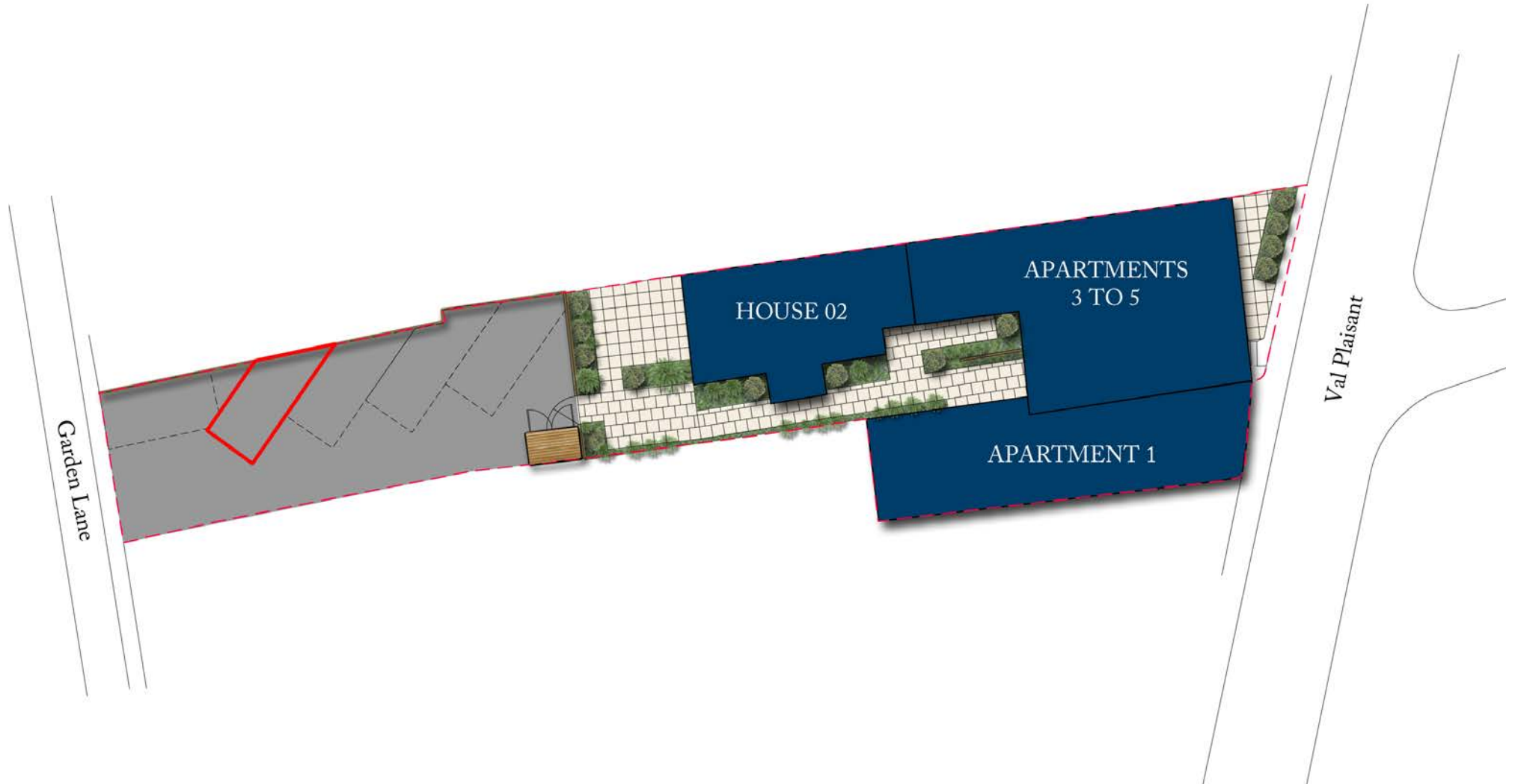




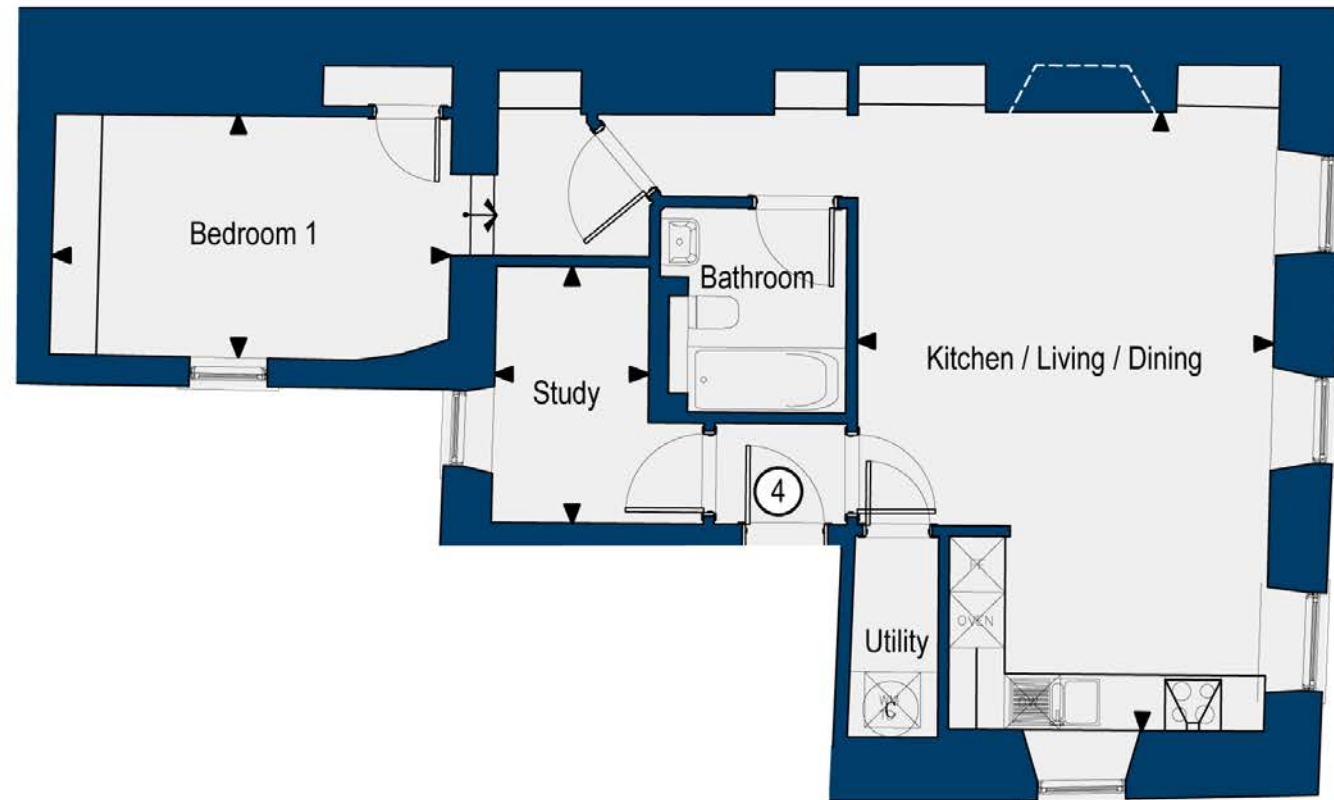
## Apartment 3 Floor Plan



## Apartment 4 Site Plan



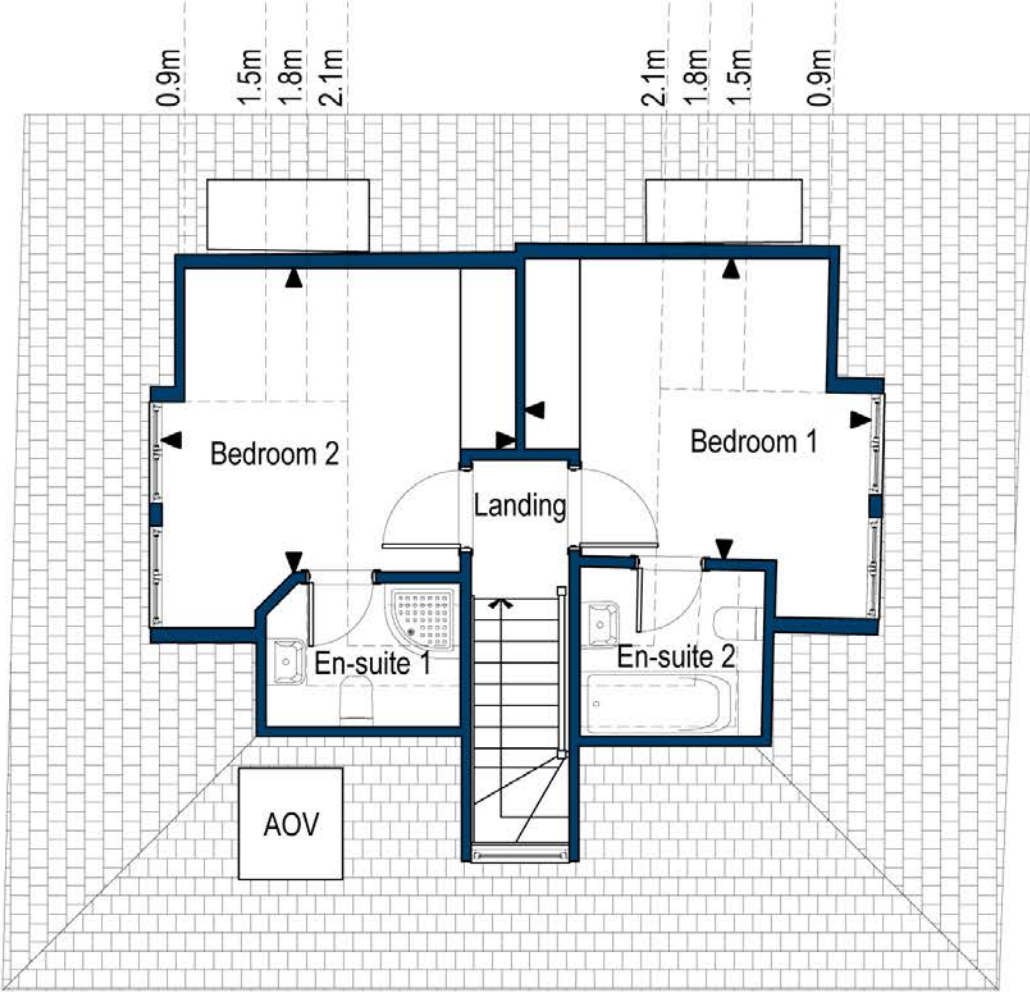
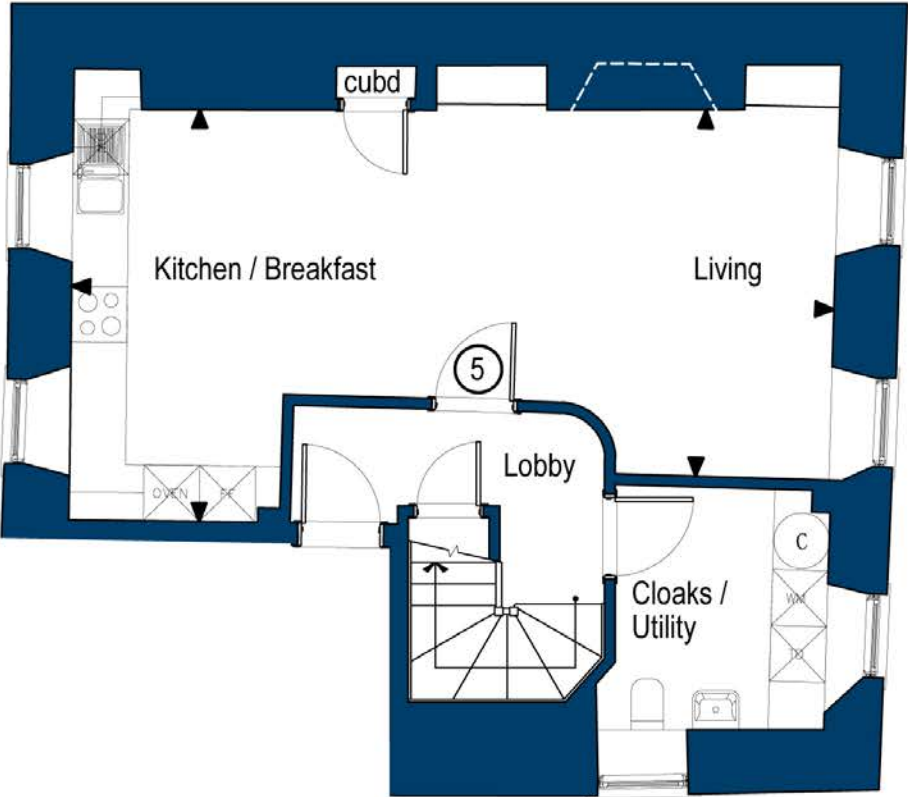
## Apartment 4 Floor Plan



Apartment 5 Site Plan



Apartment 5 Floor Plan





T: 01534 855513    E: [sales@castletreehomes.je](mailto:sales@castletreehomes.je)